



NHPQC Driver Diagram Visualizer (2026)

Infrastructure

Change Ideas

Everyone has a seat at the table. We succeed when every voice is heard, valued, and included.

Secondary Drivers

Community perinatal coalitions

Primary Driver

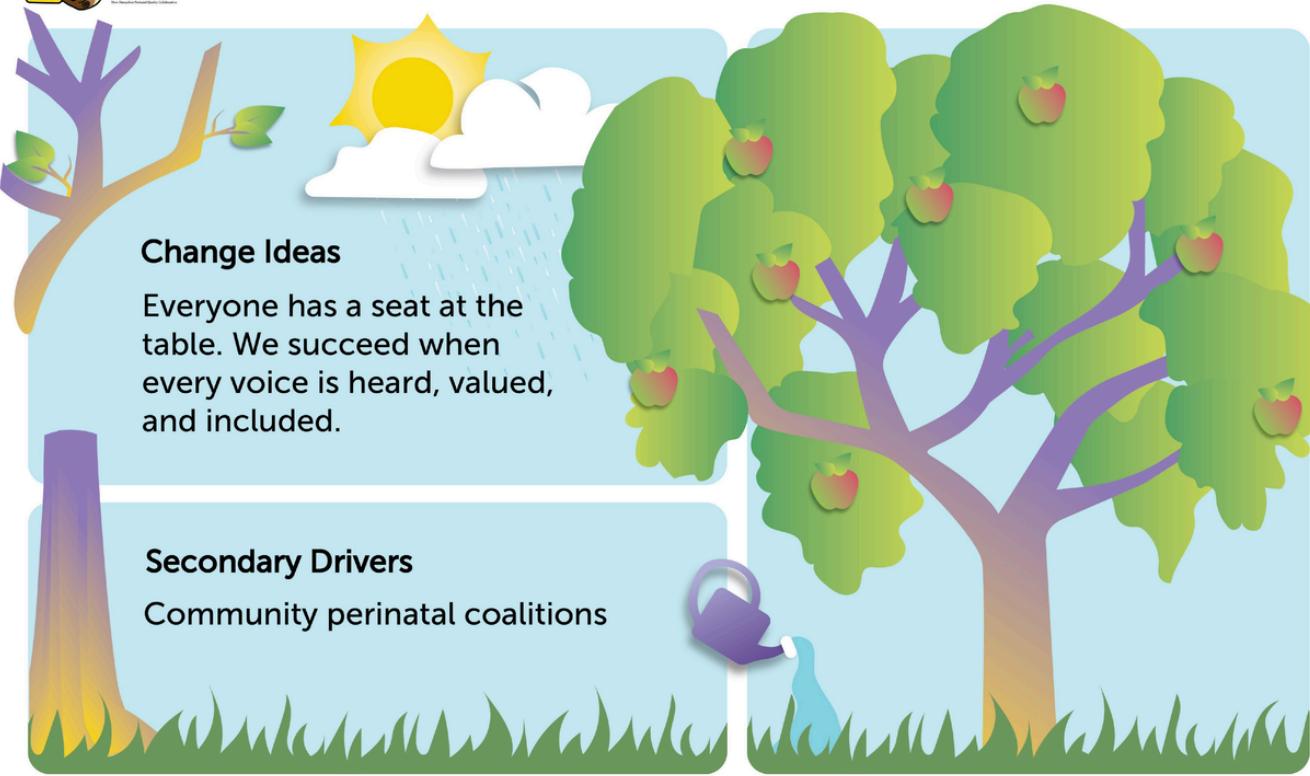
Work together to build the resources and connections our community needs to better support families through pregnancy birth and beyond.

Change In Action

We commit to meetings where every voice is heard, new ideas are welcomed with curiosity, and feedback is received openly and without defensiveness.

What Success Will Look Like

Communities, families, and people with lived experience are welcomed in, actively shape decisions, and know that their voice genuinely matters.



Infrastructure

Create sustainable infrastructure to address community perinatal priorities, increase collaboration and advance perinatal outcomes



Secondary Drivers

Community Perinatal Coalitions

Maternal Health Task Force

Hospital & Community-facing Data Dashboards

PQC Core Staff

Change Ideas

Host regular, multi-stakeholder Coalition and Task Force meetings to align efforts

Collaborate with external partners and existing initiatives to leverage shared strengths

Foster equitable, meaningful participation—including people with lived experience

Provide technical assistance to support community-level projects

Reset power dynamics through co-creation and a culture of inclusion, ensuring that communities and partners are true co-designers

Create intentional opportunities for relationship-building to strengthen trust

On the Ground Activities

Core PQC staff coordinate scheduling, prepare agendas, and uphold meeting norms to ensure smooth and effective collaboration

Core PQC staff strengthen the network by engaging partners through individual outreach and in-person meetings

Ongoing networking to understand statewide efforts, invite partnerships, and create opportunities for collaboration. MHTF workgroups include statewide partners working on specific Maternal Health (MHTF) Strategic Plan priorities

Establish intentional governance practices, communication and meeting norms to create a supportive and inclusive space

MHTF orientation sessions provide individualized support and communication to help members understand the work

Core PQC staff share best practices and successes from other PQCs and communities

Uphold meeting norms that foster inclusion—listening to all voices, exploring different ideas with curiosity, and responding to feedback openly and without defensiveness

Intentionally structure remote meetings to include small-group discussions, icebreakers, collaborative tasks, and periodic in-person meetings