



NHPQC Driver Diagram Visualizer (2026)

Safe & Respectful Care

Change Ideas

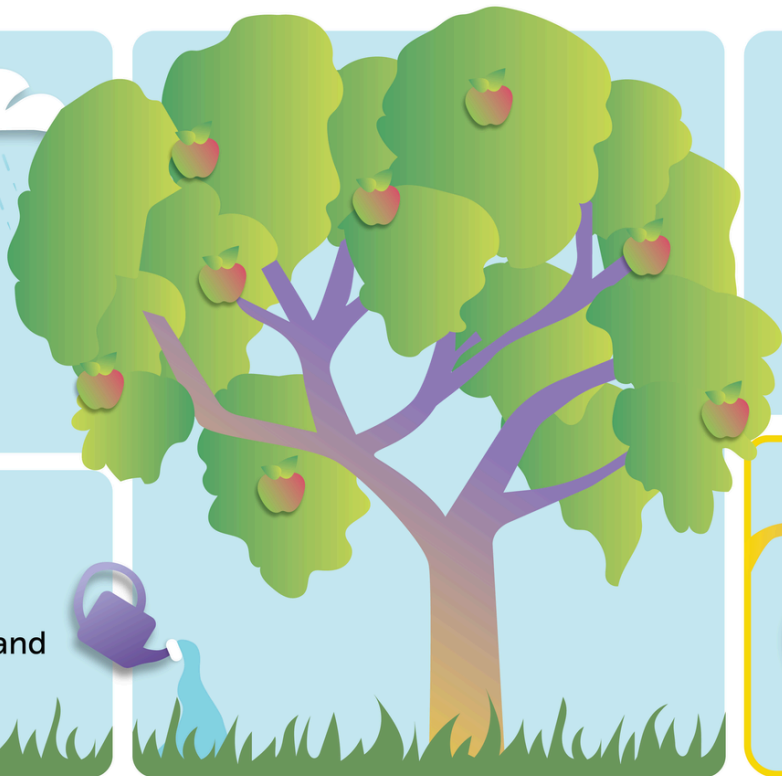
Build awareness and shared knowledge of welcoming, respectful care practices within the organizations and systems that serve families.

Secondary Drivers

Partner with organizations and systems to adopt care practices that are welcoming, respectful, and evidence-based.

Primary Driver

Collaborate with systems and organizations to promote practices that lead to better outcomes for all families.

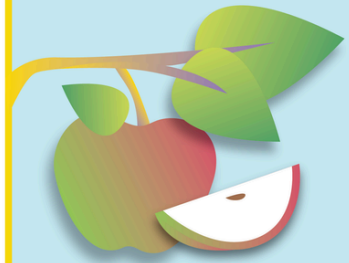


Change In Action
DCYF Community Workgroup



What Success Will Look Like

Families know that in any care setting, they will be seen, respected, and truly cared for.



Safe and Respectful Care

Ensure that safe, respectful care practices are consistently integrated into every perinatal setting



Secondary Drivers

Provide education, tools and resources

Support system change that promotes best practices

Change Ideas

Increase awareness, exchange of ideas and access to resources and continue to build knowledge and skills

Provide TA and shared learning opportunities for clinical practice

Co-create educational content with patients to ensure provider learning reflects lived experience and patient voice

Create learning and clinical environments where participants feel safe, respected, and supported

Provide access to hospital-facing data dashboards that offer real-time and benchmarked performance data

On the Ground Activities

Establish and cultivate multiple communication pathways, including the website, newsletter, and social media

Offer tailored education and small-group learning sessions focused on priority content

DCYF Community Workgroup

Support expanding perinatal peer workforce

Support building a culturally responsive workforce across all roles

Offer continuous education through a variety of pathways to strengthen clinical skills

Support clinicians in healing and managing their trauma

Hold periodic statewide workgroups with hospital QI staff to discuss relevant metrics and the most useful dashboard designs

Develop hospital-facing dashboards and provide orientation to ensure users understand how to navigate and use them