



We are the **NHPQC**

How did we get here?

What have we accomplished?

How does it all come together?





The **NHPQC** represents a statewide network **working collaboratively towards improving maternal and infant health care** and outcomes for **ALL** in our state.

Who We Are



Policy Influencers

Community Services

Clinical Providers

Patient & Family Network

Policy Influencers

- Policy Makers
- Government Agencies
- Insurance payers
- Legislators
- Professional Organizations
- and more...

Community Services

- Homebirth Community
- Family Resource Centers
- Childcare Providers
- CHMCs
- CHCs
- Women's health
- Pediatrics
- Birthing Centers
- EMS
- FQHCs
- Hospital Systems of Care
- Behavioral Health
- Community Based Org's
- and more...

Clinical Providers

- Nurse Practitioners
- Lactation Consultants
- Midwives
- Doulas
- APRNs
- Community Health Workers

Patient & Family Network

- Birthing Patients
- Family
- Partners
- Support Network
- Caregivers
- and more...

How did we get here?



Gather All Voices —

Breaking down silos, increasing collaboration thru a focus on **relationships** and welcoming voices not historically at the table



Co-Creation—

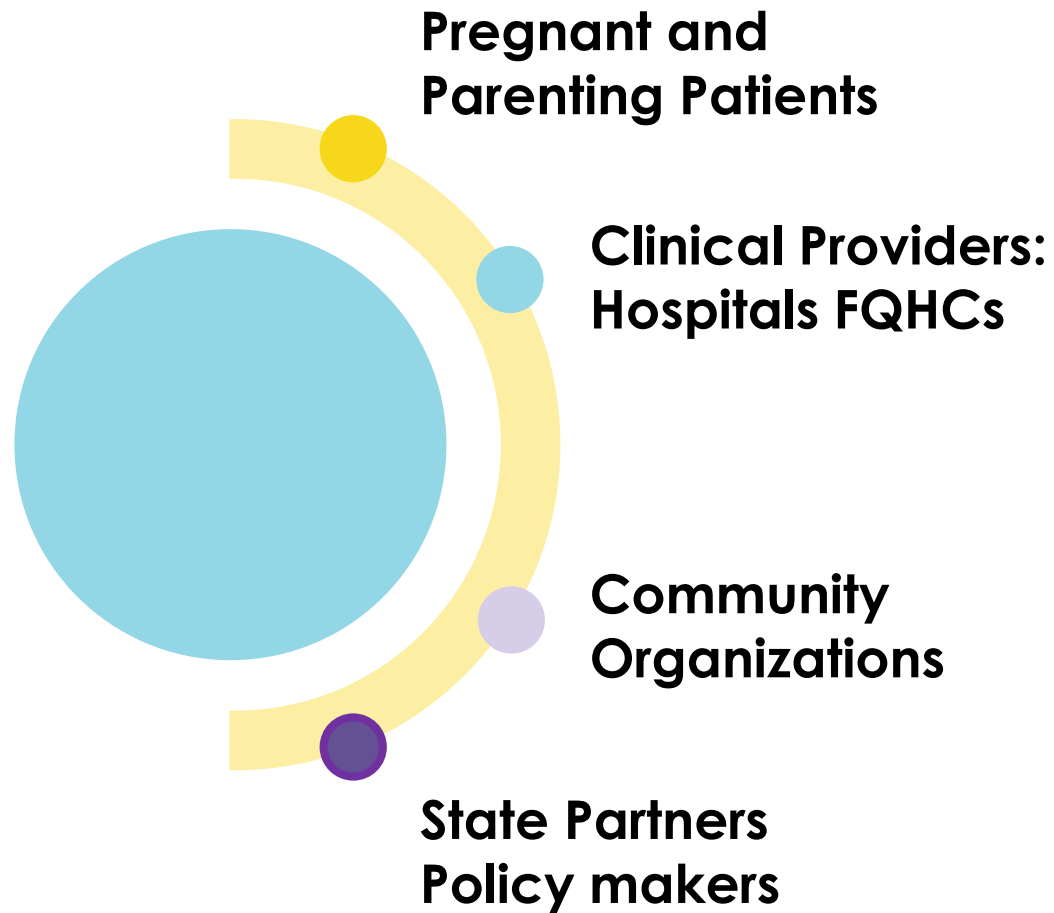
Creating space for all perspectives and ideas



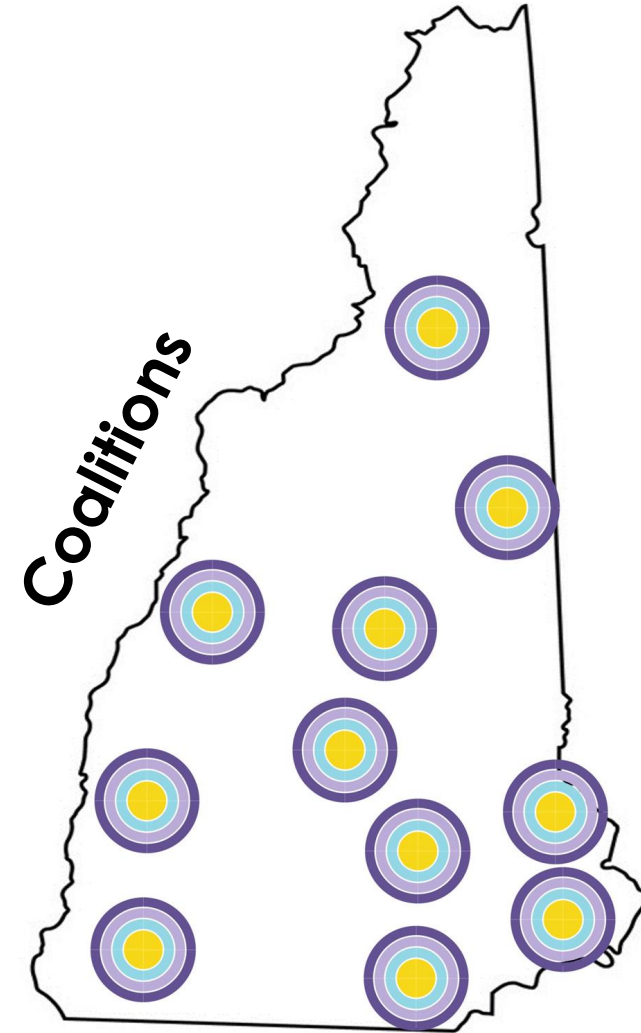
Shared Vision—

Collaboratively moving in the same direction

What is the NHPQC?



Maternal Health Task Force



What have we accomplished?

11 Coalitions

Look different in every community

- **Bringing all voices** with meaningful participation
 - Hard conversations about language, racism, power
- **Relationships** building important connections
- **Understanding** of local landscape-services, challenges
- **Action** - immediate projects creating change that align with strategic goals

Maternal Health Task Force

Statewide representation

- **Shared Vision** – one comprehensive Maternal Health Strategic Plan
- Aligning efforts and collaboratively identifying gaps
- Actionable short and long term initiatives and activities
- Identified upstream policy priorities



NEW LOGO



NH
PQC

New Hampshire Perinatal Quality Collaborative



The Maternal Health Task Force

Rebecca Amoo
Jessica Bacon
Meagan Beaton
Lindsey Boisvert
Ama Brew
Cheri Bryer
Carrie Burkett
Jessica Cantrell
Wanda Castillo-Diaz
Janet Chamberlin
Rikki Chapman
Amy Chouinard
Lisa Clina
Katy Cordova-Brooks
Athena Cote
Mary Etna Haac
Karyn Emmert
Adriana Espitia
Ashley Fife

April Fitzsimmons
Deborah Fournier
Anne Frechette
Julie Frew
Amanda Gilman
Michelle Harland
Stephanie Hawkins-Marshal
Abigail Hickey
Lucy Hodder
Kris Hering
Jennifer Hunter
Tanisha Johnson
Virginia Jones
Kailene Jones
Stevie Klein
David Laflamme
Lisa Lamadriz
Jamie LaRoche
Riley Lacasse

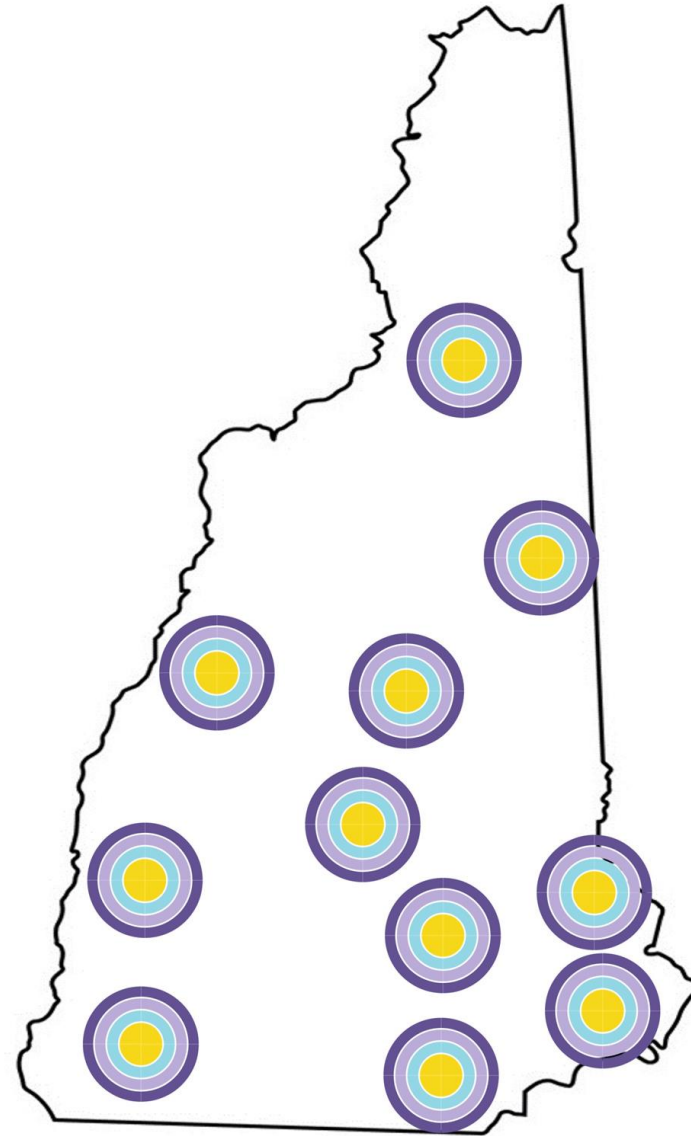
Gail Littlefield
Lindsey MacDonald
Haley Martell
Heather Martin
Melissa Martinez-Adorno
Olivia May
Audra McKinnon
Ashley Norris
Carolyn Nyamasege
Alison Palmer
Samantha Palmer
Teri Palmer
Allison Power
Rebecca Provencher
Devan Quinn
Steve Ringer
Sanam Roder-Dewan
Carin Romero
Biram Saidybah
Erin Seamonds

Rhonda Seigel
Ashley Shaw
Farrah Sheehan
Lisa Spiers
Lisa Spurrell
Sherry Stevens
Carol Stone
Emily Sylvester
Rekha Sreedhara
Courtney Tanner
Erica Tenney
Shirley Tomlinson
Rose Toner
Christina Warriner-Hamilton
Susan Wnuk
Maureen Znoj

***Core Leadership Team**

Community Coalitions

- Upper Valley
- Sullivan County
- Monadnock/ Cheshire
- Concord/Lakes
- Manchester
- Nashua
- Seacoast
- Mt. Washington Valley
- North Country
- Plymouth
- Dover/Rochester





How it all comes together?

Where do you fit in?



Goals

1

Sustainable Infrastructure That Supports Ideal Birth Conditions for Everyone

2

Pregnant and Postpartum Patients Are Supported and Have the Power To Make Informed Decisions

3

Safe and Respectful Practice for All

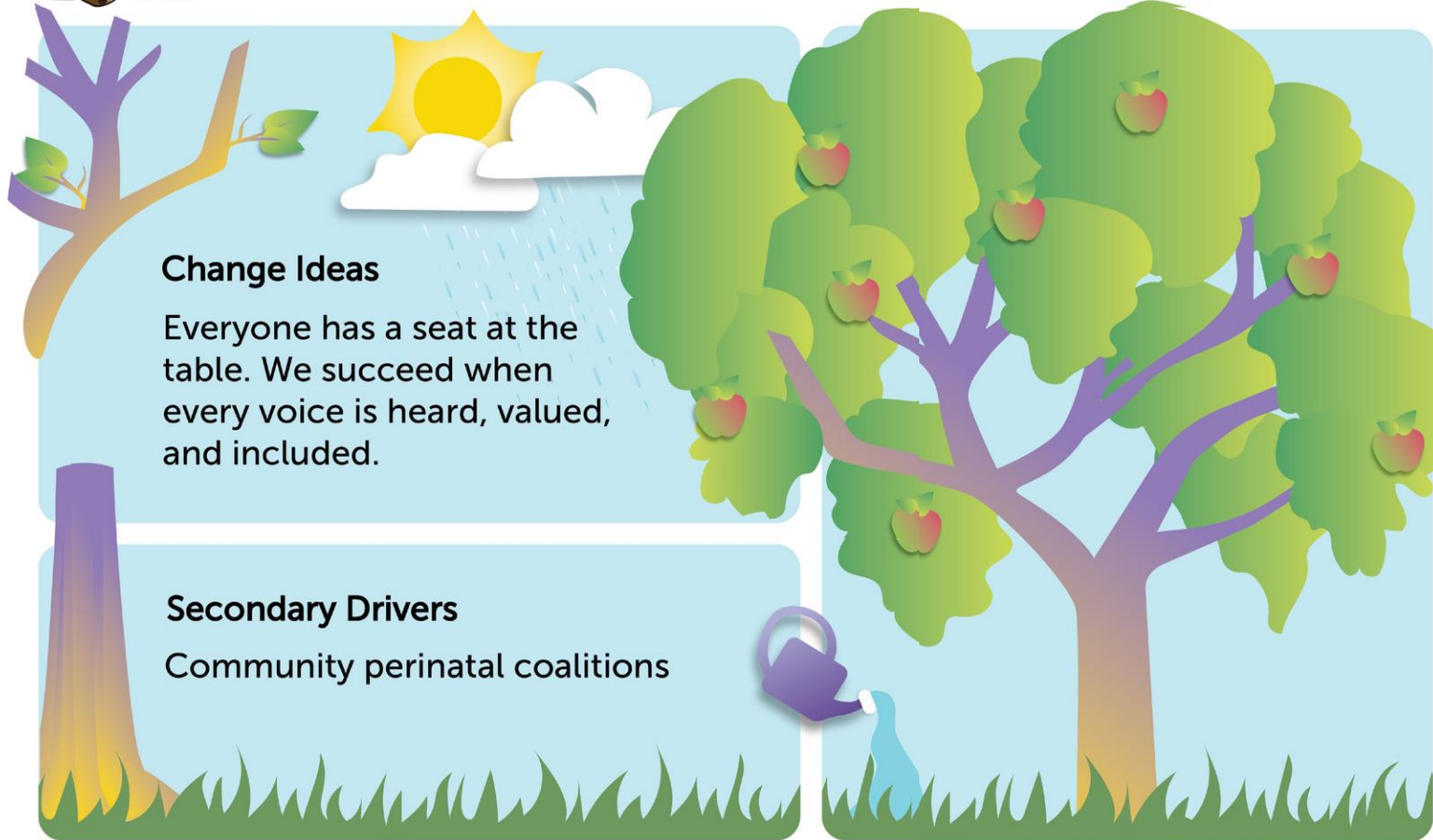
4

Data and Perinatal Health Outcomes Continuously Improve



NHPQC Driver Diagram Visualizer (2026)

Infrastructure



Change Ideas

Everyone has a seat at the table. We succeed when every voice is heard, valued, and included.

Secondary Drivers

Community perinatal coalitions

Primary Driver

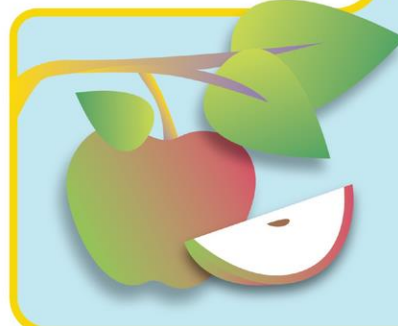
Work together to build the resources and connections our community needs to better support families through pregnancy birth and beyond.

Change In Action

We commit to meetings where every voice is heard, new ideas are welcomed with curiosity, and feedback is received openly and without defensiveness.

What Success Will Look Like

Communities, families, and people with lived experience are welcomed in, actively shape decisions, and know that their voice genuinely matters.





Vision

ALL birthing patients feel emotionally, psychologically, and physically safe as they experience caring, respectful, inclusive, high-quality care before, during and after birth

Coalition Community Projects

Building from Photo Voice and Emotional Journey Mapping to
collaborative DCYF workgroup

May 13, 2026





My Story

My Photo Voice experience

My NHPQC work



TeamBirth

Implementing Maternal Health Strategic Plan priorities statewide
Respectful Maternity Care

May 13, 2026



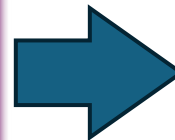
TEAMBIRTH NH



Background

NH PQC Goals:

- Goal 1: Sustainable infrastructure that supports ideal birthing conditions for everyone
- Goal 2: Equitable, safe and inclusive practice
- Goal 3: Patients are supported to make informed decisions
- Goal 4: Data and perinatal health outcomes continuously improve



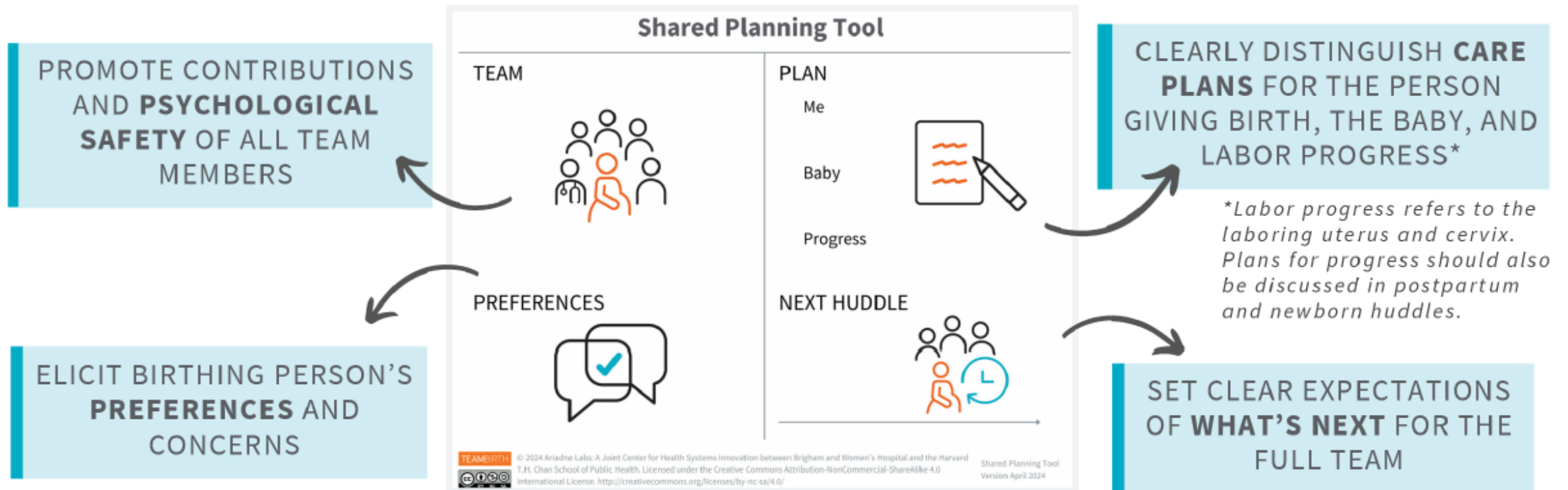
TeamBirth

An evidence-based model designed to enhance teamwork and communication during L&D.

Puts patients, and their preferences, at the center of care.

Improves patient, staff, and provider experience, as well as outcomes (decrease C-section rate).

Example Huddle Board



Expanding TeamBirth Throughout NH



TeamBirth has been implemented in multiple hospitals across the US and beyond



Exeter Hospital independently implemented TeamBirth in 2024

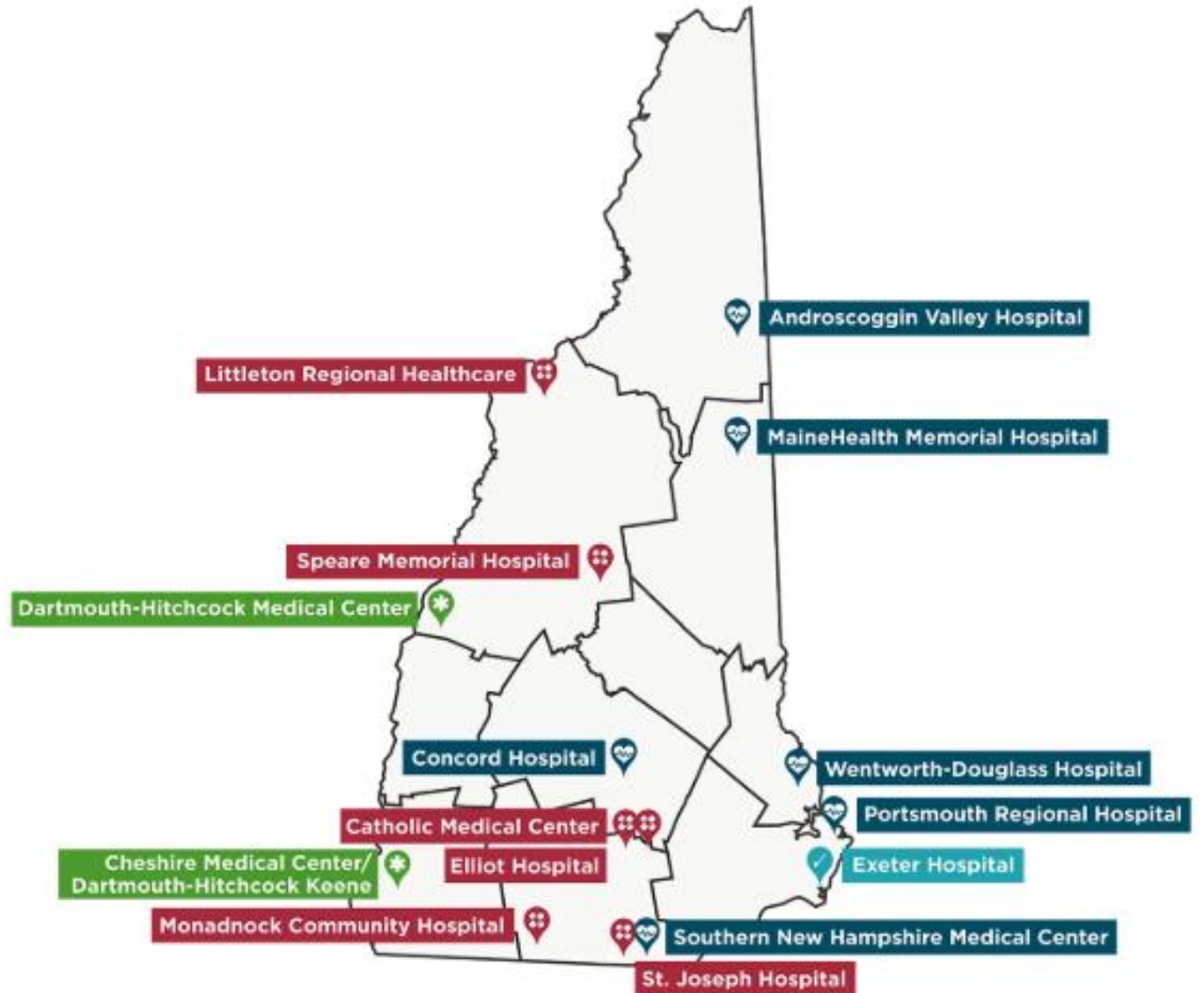


NH PQC and FHC collaborated to recommend state-wide implementation

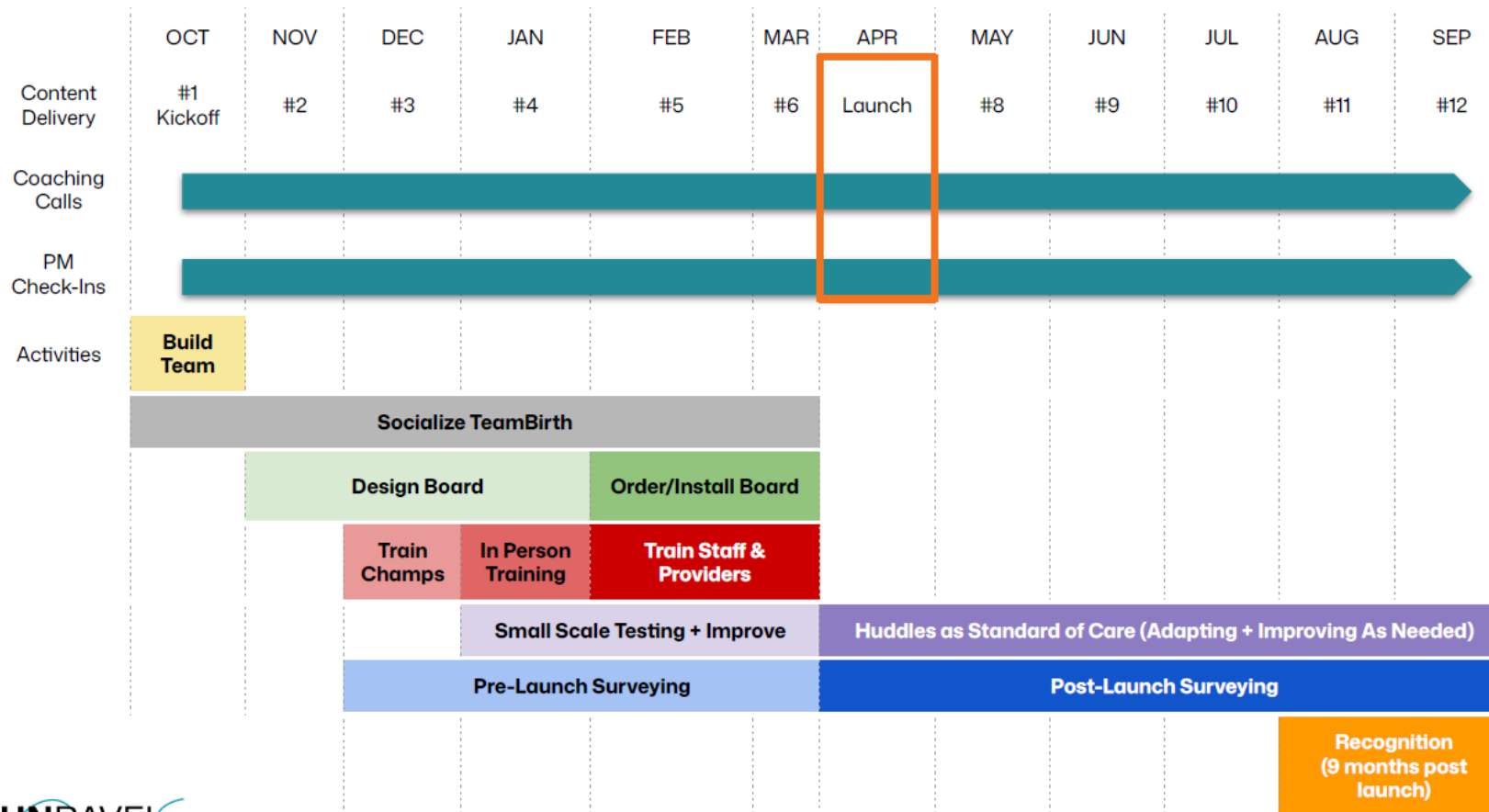


Engaging with Unravel Healthcare (offshoot of Ariadne Labs), first cohort launched October 1, 2025

Hospitals with Labor & Delivery Units



Implementation Timeline



Nuts and Bolts for Summit

PQC team with “Leis”

Packets filled with important content and instructions

Morning sessions



Our NHPQC core staff team

Julie Bosak, DrPH, CNM, MSN
Director

Emily Brayton, RN, BSN
*NNEPQIN Director of
Operations*

Cheri Bryer, CRC, CHW, CLC
*Senior Perinatal Peer Support
Coordinator and Educator*

Kelsey Caballero
Senior Conference Coordinator

Lauren Chambers, MPH
Program Supervisor

Margaret Coleman, MPH
AIM Data Specialist

Katina Cummings, MCP, IDI
Community Coordinator

Juliana Dapice, MPH
AIM Senior Coordinator

William Daugherty-Miller, MS
Data Specialist

Petrice DiDominic, RN, MSN
*MMRC
Perinatal Outreach RN*

Emily Duff, RCP, CHW
Community Coordinator

Cassidy Flanagan
Communications Specialist

Camilla Thompson, AA, RMA/CMA
Community Coordinator

Your challenge for today

Do the bingo card

